

Bass
113

OUVERTURE

6

6

f *p*

Musical notation for measures 1-5 in bass clef, common time. Measure 1 starts with a forte (*f*) dynamic, followed by a piano (*p*) dynamic. The key signature has one flat.

6

6

Musical notation for measures 6-10 in bass clef, common time. The key signature has one flat.

11

11

Musical notation for measures 11-14 in bass clef, common time. The key signature has one flat.

15

15

Musical notation for measures 15-18 in bass clef, common time. The key signature has one flat.

19

19

Allegro
7

Musical notation for measures 19-28 in bass clef, common time. Measure 19 is the start of a new section marked **Allegro** with a repeat sign and a first ending bracket labeled '7'. The key signature has one flat.

30

30

Musical notation for measures 30-34 in bass clef, common time. The key signature has one flat.

35

35

2

Musical notation for measures 35-40 in bass clef, common time. Measure 35 is the start of a new section marked with a first ending bracket labeled '2'. The key signature has one flat.

41

41

Musical notation for measures 41-45 in bass clef, common time. The key signature has one flat.

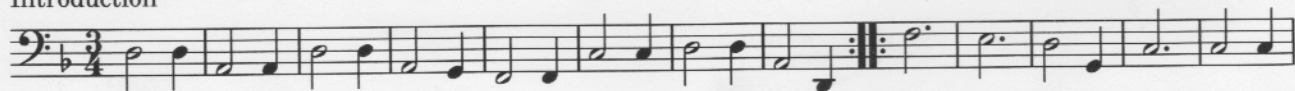
46

46

Musical notation for measures 46-50 in bass clef, common time. The key signature has one flat.

Acte deux

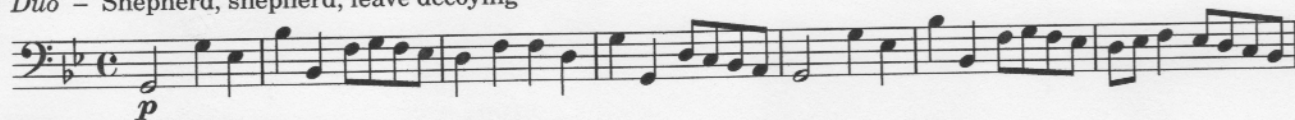
Introduction



14



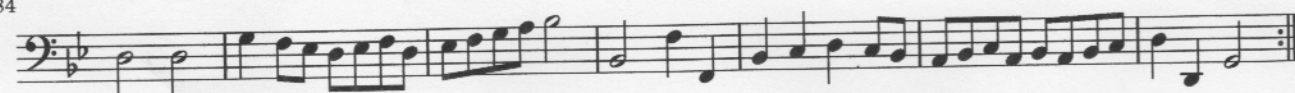
Duo - Shepherd, shepherd, leave deceoying



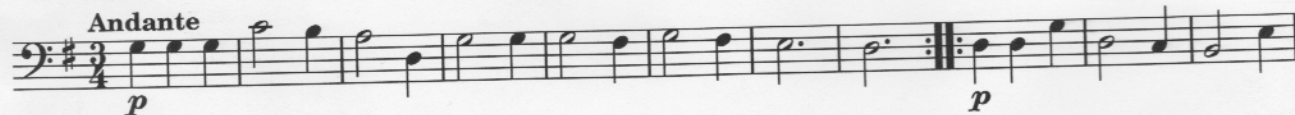
376



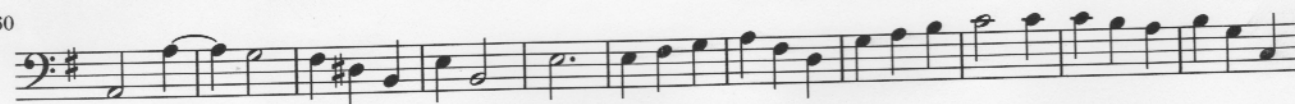
384



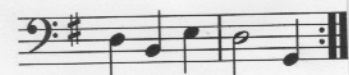
Solo & chœur - How blessed are shepherds



260



271



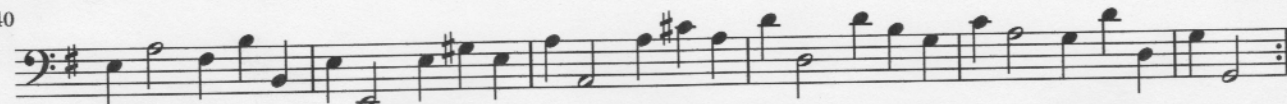
Hornpipe



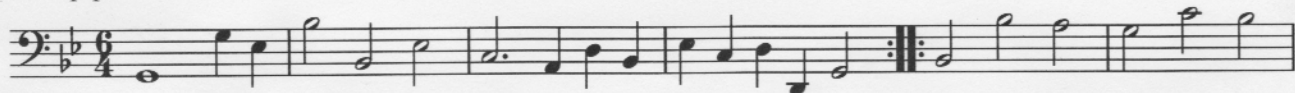
435



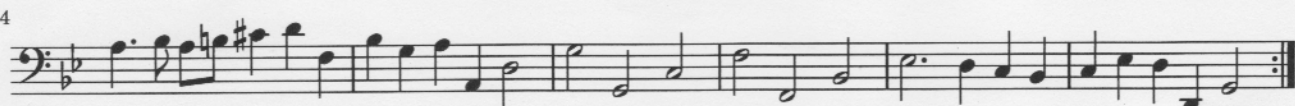
440



Hornpipe



424

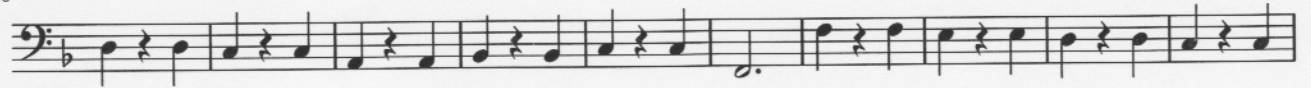


Basse
3/3

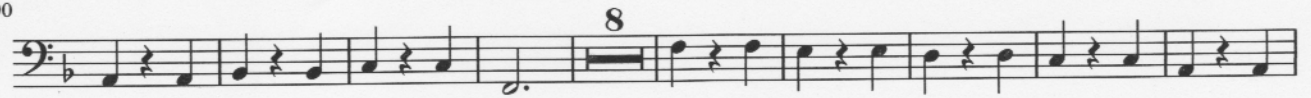
La grande danse



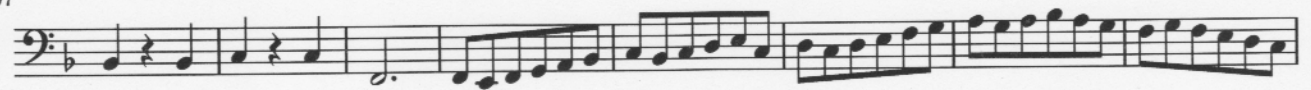
580



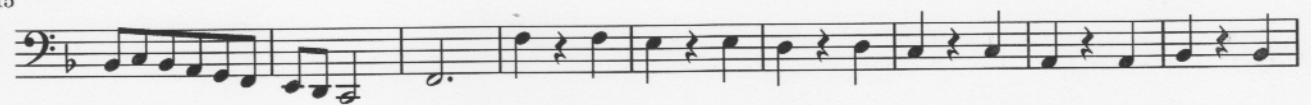
590



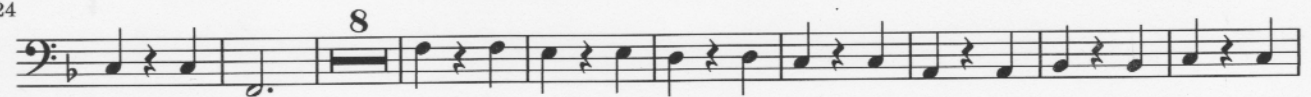
607



615



624



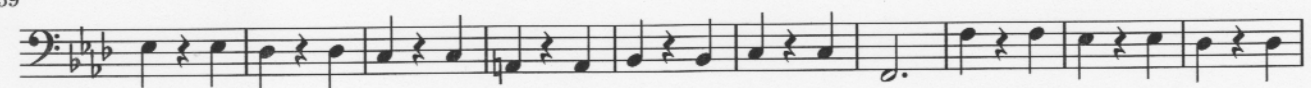
641



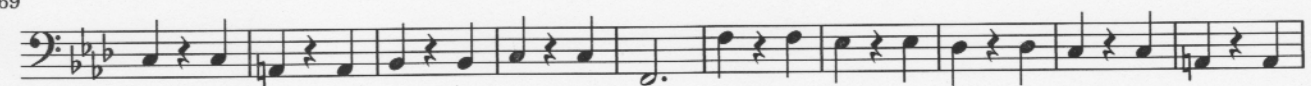
650



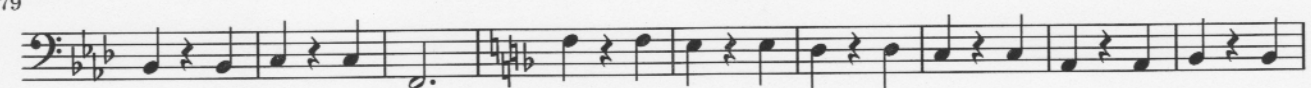
659



669



679



688

